

The Milton Abbas Bulletin

Welcome!

Welcome to the June bulletin everyone.

Inside this issue:

<i>MA Street Fair</i>	2
<i>Hambro</i>	3
<i>Steeptonbill Farm Shop</i>	3
<i>Lunch Club</i>	4
<i>Coffee Stp</i>	5
<i>Football</i>	5
<i>Quilters</i>	6
<i>Pilates</i>	6
<i>Thought for the Month</i>	7
<i>MA Art Group</i>	8
<i>VE Day Celebs</i>	9
<i>Smiths</i>	10
<i>RDA Fundraising</i>	11
<i>MA Surgery</i>	12
<i>The View</i>	13
<i>MA History Group</i>	14
<i>St James Quiz Night</i>	15
<i>Strawberry Cottage Studio</i>	16
<i>MA Parish Council</i>	17
<i>Pew's News</i>	18
<i>Picture Quiz</i>	19
<i>Contact Us</i>	19

Some fun facts for June are:

June is associated with the Roman goddess Juno who is the goddess of marriage.

June used to be the 4th month of the year until Julius Caesar came to power and added two extra months in the year 46BC.

Anglo Saxons referred to June as the “dry month”.

June has three birthstones: pearl, moonstone and alexandrite.

The flowers for June are the rose and honeysuckle.

June has the longest day on the 21st and the summer solstice occurs in June.

All kinds of beauty presents this month with flowers and sunlight.

Don't forget the fathers this month with Father's Day.

All of you tennis fans will be happy with the start Wimbledon.

Finally, famous people born in June are George Orwell, Marilyn Monroe, Anne Frank and of course our editor Paula Driver!

Wishing you all a very happy June!

Regards, (The other) Mrs Ed!



The Street Fair is almost upon us and your planning team is fully engaged in making the last of the detailed arrangements for Saturday 26th July. Most of the entertainment and stall holders have been confirmed (details are on our website at miltonabbasstreetfair.co.uk). We will be finalising the entertainment programme and the locations for each of the stallholders very soon.

We are opening the Street Fair an hour earlier than we have done in the past, as we have tended to have a bit of a gathering at the top and bottom of The Street trying to get in early. The opening times this year will be 10am to 5pm.

Towards the end of June/early July we will be posting a letter to each of the houses in The Street, to give Street residents details about road closure times and parking arrangements. In a nut shell, we ask all Street residents to move their cars to the sports field for the duration of the Street Fair, preferably the evening before, as stall holders tend to arrive very early to set up their pitches. It gets very, very busy in the morning, although we do enforce a strict route in and circuit for stall holders to minimise disruption.

We will have someone providing overwatch of the Sports Field for the night.

For residents of the parish of Milton Abbas entry is free for the household with up to two additional free tickets for visiting relatives. We will be giving out wristbands to those who will be visiting the Fair which you can use on the day to gain free entry. We operate this system on a trust basis and would ask everyone not to ask for more wristbands than resident family members and a maximum of two visiting relatives. The Street Fair charity raises funds for many local good causes and every free ticket reduces the money we have available to give to our beneficiaries.

If you would like to collect your wristbands for free entry, a member of the organising committee will be in the Almshouse Reading Rooms (building opposite the church) at the following times (free entry will not be available on the day, so please don't forget!):

- ☐ Saturday 21 June: 3pm – 6pm
- ☐ Sunday 22 June: 3pm – 6pm
- ☐ Saturday 5 July: 3pm – 6pm
- ☐ Sunday 6 July: 3pm – 6pm

If you cannot make these times please call Mark Castle-Smith on 0784 3271470 or Debbie Drammis on 07879 811163 to arrange for a separate wristband collection time.

If you need additional paid tickets, these can be bought in advance, following the link on our website.

We are keeping the pricing for the Street Fair the same as for the 2023 event as follows:

- ☐ Adults: £7
- ☐ Child (11-15): £3
- ☐ Family (2 Adults and up to 2 children 11-15): £17
- ☐ Free admission for children under the age of 11

As part of the organisation of the Street Fair, we have booked fine weather, but not too hot. However, I do understand that the weather booking clerk can be somewhat unreliable!

We look forward to seeing all on the 26th July for a great day; please spread the word and let all your friends and relatives know about our wonderful Street Fair.

The Hambro Arms

June Dates at The Hambro:

Tikka Trak – Thursday 12th, & 26th June
Basilico Pizzas – Thursday 5th & 19th June

Details of our music events for June are:

Friday 6th June – 7.30pm – Gilly Hart
Sunday 29th June – 3pm Milton Thatcher's (outside weather permitting, inside otherwise!)

Keep an eye on our Facebook page for posters giving details of events!

Our lunchtime food service is available from 12 noon until 2.30pm on Thursday's, Friday's & Saturdays

The Hambro Arms Milton Abbas Tel. 01258 880233

The Hambro Arms
Milton Abbas
Dorset
DT11 0BP
01258 880233
www.hambroarms.com

Steeptonbill Farm Shop

Selling beautifully fresh, locally-grown produce all year round!

Opening hours:

Monday to Saturday 09:00 - 17:00
Sunday 09:00 - 16:00



Contact Steve at steeptonbill@gmail.com

Steve has started digging up new potatoes! Yum Yum!!

Why not drop in for a coffee, tea or a hot chocolate in the woods!

Milton Abbas Lunch Club

We meet on **every second Wednesday** of the month in **Milton Abbas' Reading Room**.

Lunch is a two-course meal served at 1pm with a welcoming glass of sherry.

A small group of ladies take it in turns to cook a main and a pudding and we charge £5 per head. We have a 5-star food hygiene rating.

We also hold a small raffle at 50p per ticket and we ask people to bring along something to put into the raffle, ensuring everybody can take something home.

Why not come along to our next lunch meet on the **11th of June** and have a delicious meal with us? To book your place, please register your name with **Milton Abbas Post Office by Friday the 6th June, or email Jennifer:**

hrrssnsup@aol.com

The main course in June is being created by Jane. Pud is Freddy's masterpiece (no pressure Freddy!)

At the time of writing the menu has not yet been confirmed, so the below is a representative image only. The Editor assumes no responsibility in the unlikely event of any disappointment!



Coffee Stop



Coffee Stop at St James Church.

Each Tuesday from 11am until 12noon, come and enjoy a chance to catch up with fellow villagers over a hot drink and a piece of cake.

We meet inside the church in the south aisle, all are welcome.

£1 for a hot drink and £1 a slice of cake.

All proceeds go towards the upkeep of St James.

MA Football

MA Football kicks off on Friday evenings @ 6:30pm. We play on Milton Abbas Sports Field where we can see the sea and play on an excellent small sided pitch to suit 5,6 or 7-a-side games.

Our aim was to gather players of 50+ and get a little bit fitter each week. In truth we have some players in their 40's and had some younger ones too in their 20's as occasional visitors supporting their Dad.

Would you would like to play Football on Fridays? You don't need to be super fit and only need trainers with a grip for the grass pitch.

Contact Martin Kelly: Tel: 07802 260393

WhatsApp or Email: martin@redmailer.co.uk



Friday Quilters!

Fridays from 9:30 to 12:00 in the Milton Abbas Reading Room.

You do not have to be a quilter! Bring your knitting or anything else that you are currently working on.

We stop for coffee, tea & biscuits or, if you are lucky, a piece of cake! We will be very pleased to see you.

Further details from **Anthea** - 01258 269348

Pilates

 PILATES WITH CATHERINE

PILATES WITH CATHERINE

MILBORNE ST ANDREW VILLAGE HALL

Do you have aches and pains, osteoporosis, joint replacements or sciatica? Still able to get up and down from a mat and want to stay active and supple?



If so, my classes will improve your strength, mobility and balance as well as keep you in better shape.

FREE TASTER CLASS OFFERED

Friday mornings 10.45am - 11.45am and 12 pm - 1pm

I am a **Pilates Foundation** trained teacher with over 15 years experience of both matwork and rehab apparatus

TO BOOK YOUR SPACE OR FOR MORE INFORMATION CONTACT CATHERINE ON:
07449 346229
catherinehoworth@outlook.com

 PILATES FOUNDATION
ESTABLISHED 1996

Thought for the Month

I happened to be in one of the churches in the benefice (our group of 6 villages and 8 church buildings) the other day when a couple of visitors came in. People have various responses when they come through the door and find the Rector sitting there. At one extreme those who are astonished to find me there because “it isn’t Sunday”, to the other where the assumption is that I spend all day, every day in a church!

The truth, of course, is somewhere between the two.

On this occasion the visitors just wanted to have a look around and then asked me a couple of questions regarding the history of the building. Curiosity satisfied, they went on their way.

For me though, it set me to thinking. The churches in my care are, I know, regularly visited. Someone I met recently rather sheepishly confessed and apologised for the fact that they do not come to church services, having been put off by the attitude of the adults when they were taken to church as a child.

It’s a sad tale that I’ve heard before and it does make me sad because churches should be welcoming and inclusive. However, this particular acquaintance went on to say they do come into the church fairly often during the week and find great comfort there. This is one reason why I like the fact that our churches can all be open and that people can come and go at will.

William Temple said that “The Church is the only society that exists for the benefit of those who are not its members.”

Now it may be true that he was speaking about the church as a body of believers, but I also like to think that an open church building is a good step in the right direction in helping those who are seeking and wish to come but are not ready for a full church service.

Church buildings play a large part in my life which will come as no surprise I’m sure and for me they are a home from home. When I go into a church there is a peace and quietness there that allows me to leave the world behind for a few minutes and focus on God.

For those who visit our churches I hope that they find solace if that is what they need, and comfort, and a sense that they have come to a place that is loved and has been a place of prayer for generations; that they may add their prayers to all that have gone before and know that they are heard.

Blessings

Rev’d Lewis

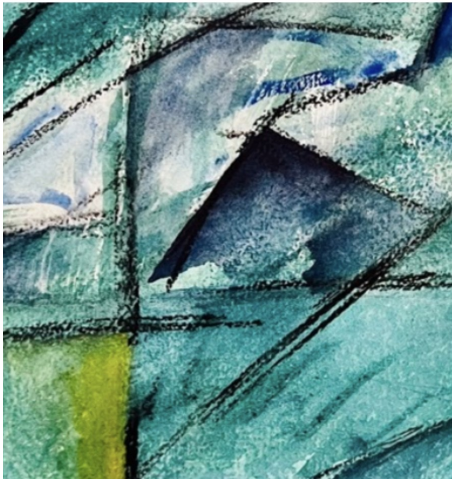
Milton Abbas Art Group



Milton Abbas Art Group are looking forward to being inspired by our next visiting artist, David Chandler.

<https://www.davidchandler.net/>

DAVID CHANDLER



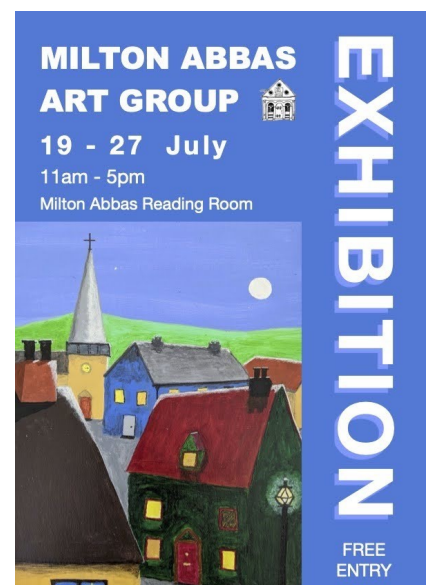
David says:

“We will look at how we can take the lead from our materials, rather than the other way around and respond to what is happening on the paper in order to create free and colourful, watercolour abstracts based upon the landscape.”

The workshop is being partially funded by a grant from the Milton Abbas Street Fair trust so is affordable for all members, and we have also invited a few non-members as spaces were available.

If you are interested either in joining our friendly, creative group or in attending future workshops, please contact one of the committee members below.

The group are also preparing for their annual exhibition in the Reading Room which starts on Saturday 19th July and lasts for 10 days. If you feel you are able to advertise anywhere for the group, please let us know. Hopefully you'll be able to come down yourselves and peruse, ponder and perhaps purchase the paintings, photography, pottery and other creative items which the artists are displaying.



Eve (Chair Person): pen@evebonham.co.uk

Louise (Treasurer): lfreirart@gmail.com

Instagram: [miltonabbasartgroup1](https://www.instagram.com/miltonabbasartgroup1)

Facebook: <https://www.facebook.com/MiltonAbbasArtGroup>

VE Day Celebrations



Thank you to everyone that came along to the sports field on Thursday May 8th in order to mark the auspicious occasion of the 80th anniversary of VE Day.

The eight decades since the end of the Second World War in Europe was marked with Milton Abbey School CCF sharing with us a moving tribute, singing the hymn "I vow to thee my county", a speech, flag raising and beacon lighting.

A BBQ and refreshments were available and the takings from these raised £308.40 for Help for Hero's.

Thank you to Hayley for her kindness and generosity in donating some of the BBQ food costs to the Charity Help for Hero's. Thank you to Jennifer for ringing the Bell at St James Church.



It is always a delight to hold these village events, and the weather was kind and the voices of us all singing the hymn was meaningful and stirring.

Well done Milton Abbas!



Summer 2025 is in full swing!

Until September, our new Summer Menu is available Weds-Sat lunchtime!

Expect Seafood dominance, daily market specials, exceptional salads and our rave review Scotch Eggs and Sausage Rolls.

On Friday nights you can enjoy hand-stretched Pizza from our wood-fired oven and on Sundays - Brunch, Pizza and Seafood specials!

Picnics between the Vines and Afternoon Tea available, pre-booked every day throughout

Please follow us online: <https://www.smithsdorset.com/>

Or to book via telephone, please call **01258 839095**



RDA Fundraising Auction



Milton Abbas RDA Group are excited to be holding a fundraising auction on Saturday 7 June at the Hall & Woodhouse Visitor Centre, Blandford. We have a number of fantastic lots with something to suit everyone, for example:

- * Ticket for 4 people for Center Parcs, Longleat
- * Horse riding lessons
- * Holiday cottages in Cornwall and Swanage and other local places
- * Cream teas
- * 2 tickets for Victorious Festival, Portsmouth
- * Rounds of golf at Came Down and North Dorset courses

Plus much, much more! There will also be more than 30 smaller instant auction items on our Tree of Promises like 2 hours gardening or a pet supplies hamper.

Tickets are now SOLD OUT!

However you can still bid in advance for any of the items for auction by emailing or texting Debbie:

mardatreasurer@gmail.com or 07879 811163

Thank you for your support!!

If you have any queries in the meantime please don't hesitate to contact Debbie or myself.

Sue Hodder

Milton Abbas Riding for Disabled Group (Charity No. 1177691)

07739 469946

Milton Abbas Surgery

Carers Week 9th - 15th June 2025

Carers Week is a time to recognise the incredible work done by unpaid carers across the UK. This year's theme, *Caring about Equality*, shines a light on the importance of supporting carers from all walks of life.

You might not see yourself as a carer - many people simply help a family member or friend without thinking twice. But if you support someone with an illness, disability, mental health condition or addiction, and they rely on you, then you are a carer.

Letting us know you're a carer means we can better support you. We understand the extra pressure caring brings and want to make sure you have access to the right help and information. If you haven't already, please tell the surgery that you're an unpaid carer and who you care for, so we can note it on your records. You can also pick up a carers information pack from Reception or view it online on our surgery carers page at www.masurgery.co.uk.

To all carers – thank you. We see you, we appreciate you, and we're here to help.

DNA (Did Not Attend) Appointments

Between January 2025 and April 2025 **189** patients did not attend their appointments, equalling a total of **53 hours 45 minutes of clinical time wasted**.

- **NURSE** time wasted: 28 hours 40 minutes = Equivalent of 172 blood tests; or 57 asthma/COPD reviews; or 57 baby immunisations; or 86 cervical smear tests lost
 - **GP** time wasted: 18 hours 40 minutes = 75 GP appointments lost
 - **HCA** time wasted: 4 hours 5 minutes = Equivalent of 24 blood test appointments lost
- PHYSIO** time wasted: 2 hours 20 minutes = 7 Physio appointments lost

Some of these appointments are up to 40 minutes long, so missing your appointment or forgetting to cancel means we waste valuable clinic time. For ONE missed Long Term Condition Review appointment, THREE people could have had blood test appointments, so it's important not to waste these slots.

If you can't attend an appointment, please can we ask that you cancel it at least an hour before so someone else can receive the care they need. This can be done either over the phone or by replying CANCEL to your text reminder.

Thank you for your cooperation in this matter - **It could make a huge difference to another patient.**

Appointments

Please can we ask that you check whether your appointment is at our main surgery at Milton Abbas or at our branch in Milborne St Andrew. This should be told to you at the time of making your appointment and it will also show on your reminder text.

We understand that mistakes can happen, but we can't guarantee your appointment if you arrive at the wrong location, so please double check before you come. Thank you for your understanding and cooperation.

Milton Abbas Surgery (cont)

Contact details

Keeping your contact details up to date helps us support you better. It means we can reach you quickly if we need to discuss your care or send you reminder messages. So please make sure to let us know if you change your address, phone numbers or email address. Thank you!

Do more with the NHS App

If you're a patient at our practice, you can use the NHS App to access a range of NHS services on your smartphone or tablet.

It doesn't replace existing services. You can still contact us in the usual ways. But, once you have verified your identity in the app, you will have easy, 24/7 access to a growing range of health services and information. You can order repeat prescriptions, find NHS services, view your health records and much more.

You will need to sign up to Systonline to be able to access the NHS app. To do this, you will need to bring in two forms of ID into the surgery – one needs to be photo ID and the other a utility bill showing your address – and then one of our admin team can set you up.

If you need help to set up and use the app, Dorset Council run free Digital Champion sessions at Blandford Library.

To book a session, please call **01305 221048**.



The View

Come and visit us, we are located at the Milton Abbas Sports Field and offer a welcoming spot with scenic Dorset views. We have a cosy indoor space, and beautiful expanding covered outdoor area sheltered from sun or rain, dogs are very welcome!

With a menu featuring hot and cold food, pastries, toasties, and unique treats. Vegetarian, gluten-free, and dairy-free options are available. We also sell Jurassic Roast coffee, Clipper teas, and local Piddle Brewery beers.

There is free parking, a bike rack, and family-friendly sports field.

OPENING HOURS

MONDAY: 9AM-4PM

TUESDAY: CLOSED

WEDNESDAY: 9AM-4PM

THURSDAY: 9AM-4PM

FRIDAY: 9AM-4PM

SATURDAY: 9AM-4PM

SUNDAY: 10AM-3PM



Find us on our website: www.theviewcoffeeshopma.com or our social media pages



Milton Abbas Local History Group

As well as giving a series of monthly talks, we also have a **Research Group**.

We meet about four times a year and discuss our progress on the topics we are each researching. This is the most exciting part of being a member of the Milton Abbas Local History Group - rather than sitting listening to talks, for me it is much more rewarding hearing about the new information coming to light. One of the most mysterious is Charles Bullock's finds in a seemingly empty field devoid of any evidence of buildings or structures and well away from the old market town - there was clearly an iron forge, a lead working area, and many high-status objects such as silver pennies, buttons and horse fittings which must mean that industry and trading was occurring here in medieval times.

New techniques and information are coming to light all the time. With public access to LiDAR we have a whole new perspective on the changes of landscape and the move of buildings, building the lake, St Catherine's Chapel and its "encampment". Steve Griffin has been leading this surge of revelations.

Anne Brown from Sydling St Nicholas (which was one of Milton Abbey's manors before it was sold to Winchester College at the Dissolution around 1540) has been translating some medieval documents. We are now beginning to realise that Milton Abbey was far wealthier than previously thought just after the fire of 1309 destroyed most of the Abbey buildings. The income from its manors was quite prodigious and should have resulted in it being rebuilt much sooner than it was.

Now that Lyscombe (once owned by Milton Abbey) has recently been bought by Dorset Wildlife Trust, they have asked us to share our research with them - another topic opens up!

These topics are just a few of the many that the Research Group is working on. There is not space here to tell the many stories so far..

There are so many mysteries of Milton Abbas' history still to solve - why not get in touch and help us along.

Bryan Phillips

St James Quiz Night!

Its back!Yes, I hear you say!!!!



A fun Quiz night will be held at
St James Church, Milton Abbas.

Saturday 21st June 2025

6.30pm onwards

Cheese and Wine will be available

(please could we ask for pre-orders for a cheese board at £5 each so that we
can be more organised this time!)

£10 a table/team of 4-6 people

Quiz masters for the evening will be Jennifer Harrison, Bev Martin and Paula Driver

All proceeds go to the upkeep of our beautiful village Church, St James

To book a team table and order cheese boards please to Bev Martin:

beverley.martin11@btinternet.com





Strawberry Cottage Studio

The roses are out for June!

So new inspiration is coming in the form of silk painting in Louise's studio. The pretty pinks have been joined by oranges and greens to create some new designs and miniature pen and watercolour paintings to depict our stunning Dorset countryside have been created.



Something new for June at Strawberry Cottage Studio are delicate drawstring linen bags made from Susie Watson's specialist fabric. Perfect for keeping bread fresh, or perhaps for sending to a friend as a reusable gift bag?

The studio is open when Louise is home and the sun is shining (let's hope for more of that!), so please do pop in and take a peek. She'd love to see you.

Contact Louise to open by appointment, for commissions or for other enquiries:

Website: www.StrawberryCottageStudio.com

Email: lfreirart@gmail.com

Instagram: @louisefreirart



Milton Abbas Parish Council

Community Speed Watch

The Parish Council would like to canvass residents of the Parish again to see if there is sufficient interest in us pursuing options for a Community Speed Watch. We recognise that with a lack of pavements and street lighting, speeding in the village is a real concern to some.

“Community Speedwatch is a national initiative where proactive members of local communities join with the support and supervision of their local police to record details of speeding vehicles using approved detection devices.

Registered keepers of vehicles exceeding the speed limit are contacted, initially with a letter explaining the potential risks and consequences of their dangerous behaviour. Repeat offenders will receive a visit from the local police, irrespective of where they live. Beyond these friendly gestures, focused enforcement and criminal prosecution follow based on the collated evidence.”

“CSW Online operates nationally on behalf of the police and communities to organise and join up Speedwatch activity. The organisation coordinates responses based on the collated data from all groups involved. Speeding is not just a local phenomenon and neither is Speedwatch.”

Such a scheme would need to be operated by a team of volunteers from the village who would undergo training from Dorset Police. A few offers were previously received but not sufficient to restart the scheme.

If interested please contact Cllr Jill Jordan:

jill@miltonabbasparishcouncil.gov.uk

May Picture Quiz Result:



Last month's photo was of one of the finials atop the gateposts at the road entrance to Deer Park properties (leading into the woods near the old Gatehouses at the top of King Edwards Drive - beside Paula and John K's house

There has been some discussion as to whether it's an acorn or a pineapple, but I'm not getting drawn in to that particular argument!

Iain Baker claimed was "too easy".

Must try harder!

June Picture Quiz:

Do you know where this was taken? Recognise the image?

Drop us an email and let us know!

The first correct responder gets their name in next month's MA Bulletin.



Articles and Feedback Gratefully Received:

MiltonAbbasBulletin@GMail.com

or contact the editorial team directly:

Paula Driver (June Birthday Girl!)

Bev Martin

Stuart Driver